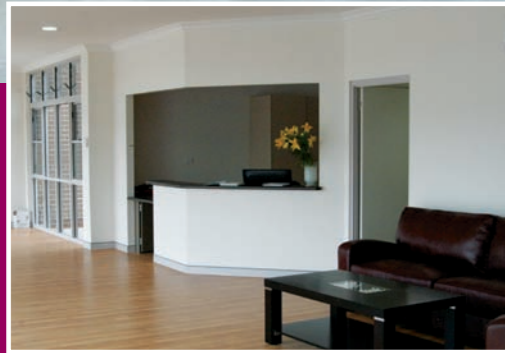




Above: The Mai-Wel Community Centre

Right: The reception area of the new Centre

Far right: The Community Participation Program's new accommodation



CEO's Message

It is with great excitement that I present to you the 3rd edition of The Networker for 2010. This edition brings with it some very exciting milestones for Mai-Wel as we celebrate 50 years of programs and services.

As you will see, The Mai-Wel Celebrity Comedy Debate was such a successful evening, not only raising more than \$20,000, but providing Maitland with a quality, entertaining event. As a Baby Boomer, and proud to be so, I was delighted that the outcome of the Debate resulted in the negative team of Effie Stephanides, Aaron Kearney and Melinda Smith taking the crown, successfully arguing that Baby Boomers ARE a National Treasure!

Each year around this time, I take a few moments to reflect on what has happened at Mai-Wel since our last Debate.

On reflection I am proud to say that today we are now supporting more people with a disability, having created new job opportunities including 15 new roles in our newest business, Mai-Wel E-Cycling Services. Today, Mai-Wel employs more than 300 people from our local community; 115 of them are people with a disability.

More than \$7 million in wages is injected into the local community annually with the majority of staff living here in Maitland or in the Lower Hunter.

The Mai-Wel Celebrity Comedy Debate began in 2005 to support our ambition to build a multi-purpose centre on our land fronting John Street, Telarah.

Today, I can tell you, in the words of George W Bush: Mission accomplished. Throughout August, staff, clients and our programs have begun moving into the \$2.5 million building and there is much anticipation and excitement with clients and staff alike.

This is a most exciting development realised with the assistance and generosity of this community. This new facility will house our Community Participation (CP) Program, the COMETS Day Programs and our latest project, the Creative Arts Program.

Both programs had outgrown their existing premises and staff and clients have had to make do, whilst waiting patiently in anticipation of the opening of the new Centre. I appreciate and thank the management and staff of the programs for their care and support of our clients.

The Mai-Wel Community Centre will not only provide better designed and more appropriate spaces to deliver services but will allow us to increase our service capacity over time, to at least double our existing client base. Aside from the increased capacity the building provides purpose built layout, sensory rooms and gardens, personal care rooms, delightful indoor and outdoor space and ample staff parking. This will be a significant boost to people with a disability and their carers and a facility of which our Maitland community can be proud.

I acknowledge and thank Wayne Brown and his Team at GWH Building Company for their generosity, quality advice and for their attention to detail which resulted in the completion of the state of the art building.

A special thanks also to Jeff Kerr and Stuart Jones who supervised the Project.

These programs will provide a variety of opportunities for people with a disability to increase skills, participate in community activities and build friendships.

Thank you for the part you have played in supporting the development of this excellent new facility which will provide a range of wonderful opportunities and create much joy for people with a disability living in our community.

In May 2010 we launched our 50th Anniversary Celebrations with a range of events and celebrations planned throughout the next 12 months culminating in a Gala Ball in May 2011. I hope to see each and every one of you there on the night which is sure to be an evening to remember.

As we look to our future, we are focusing on improving opportunities for people with a disability who are ageing. Most recently our focus has turned to finding ways to ensure our older clients and residents have homes that are more suitable to allow them to age in place. The need for people with disabilities to have a place to live, learn, earn and have the joy in life we all seek is as great a challenge today as it ever was.

The team at Mai-Wel never fails to amaze me with their tenacity and ingenuity. They find a solution where others might simply walk away. We have a great team and every day I am reminded that the impossible for some, is most definitely possible at Mai-Wel.

I would like to thank the Board of Directors for their continued support and enthusiasm for the "Mai-Wel way" as they help to grow and strengthen our organisation.

Finally, I cannot let the opportunity pass to thank our community, local business, donors and volunteers for their continued and unwavering support of Mai-Wel.

Together, our community is helping to advance the lives of people with a disability.

Best Wishes,

Pennie Kearney

Pennie Kearney
CEO



NEWS

Mark The Mai-Wel Group's 50th Anniversary with Wine!



In May 2011, The Mai-Wel Group will officially turn 50 and to commemorate this remarkable milestone, Unique Exposure and The Mai-Wel Group have produced a commemorative wine and port range that like The Mai-Wel Group, just keeps getting better with age.

A fantastic range of whites, reds and a port have been picked to tantalise your palette and give you a lasting memento of the anniversary as well as raise much needed funds for the organisation. Wines include;

- 12 personalised Draytons Secret Reserve Shiraz or Secret Reserve Chardonnay for only \$320
- 12 personalised Draytons Semillon Chardonnay or Shiraz Cabernet or six of each for only \$170
- Commemorative Draytons Tawny Port only \$20 per bottle.

To learn more about the fantastic range of commemorative wines available or to place an order call 02 4932 8599, visit www.maiwel.com.au to download an order form or email wine@maiwel.com.au

Inaugural Auction Item 'A Hoot'

Saturday 17th July not only marked a night of fun and frivolity at the Mai-Wel Celebrity Comedy Debate but the start of something special for Denise Betteridge, owner of Signature Clothing, who outwitted and outbid several other patrons to take home the inaugural 'I give a HOOT about The Mai-Wel Group' Perpetual Trophy.

The trophy, proudly donated by Tony Cant Real Estate Maitland, was the topic of much conversation at the Debate as the bidding war began. Bidding started vigilantly until Peter Denhart, Hunter Regional Manager of Rural Press Limited, offered a half page advertising spot in The Maitland Mercury, in addition to the promise of the trophy and presence on The Mai-Wel Group's website. But it was the pride and honour of being the 'First Hooter' to take home the unique trophy for 12 months that led Denise to set the tone and place a \$1,600 bid that threw out the competition.

The trophy will live with Denise at Signature Clothing in Rutherford for the next 12 months and be a constant reminder to her, her customers and the community that Signature Clothing is an avid supporter of The Mai-Wel Group.

"Signature Clothing have been passionate supporters of local charities and community groups since our inception, seeing it as our corporate responsibility to give back to the community we operate our business in" Denise commented.

Signature Clothing are the corporate image professionals, providing an extensive range of premium corporate uniforms, sports and promotional wear with more than 20 years experience in delivering quality products and services not only to the Hunter region, but Australia wide. Signature Clothing are the supplier of all corporate uniforms worn by staff of The Mai-Wel Group.



"We are proud of our association with Mai-Wel both as a supplier and a supporter. We encourage other local businesses to get involved by looking at their business model to see if there is an opportunity to provide employment for a person with a disability, or to make the decision to support Mai-Wel either through business or staff donations, buy tickets to their fundraising events or even by bidding on the right to hold the 'Hooters' trophy next year" she said.

For more information about Signature Clothing visit www.signatureclothing.com.au or to find out how you can support The Mai-Wel Group visit www.maiwel.com.au.

NEW STAFF

Mai-Wel welcomes the following new permanent and casual staff:

Lisa Outram

**Hunter LabourForce Solutions
Specialist Mental Health Employment
Support Worker**

Adam Jordan

PACE Setters Production Assistant

Joseph Brown

The Enterprise Centre Fabric Machinist

Stacey Bradley

**Mai-Wel E-Cycling Services
Support Worker**

Nathan Whyte Southcombe

**Mai-Wel E-Cycling Services
Support Worker**

Jason Davis

**Mai-Wel E-Cycling Services Production
Assistant**

EMPLOYMENT ANNIVERSARIES

Congratulations to the following people who recently reached a milestone anniversary at Mai-Wel. We thank you for your continued service.

David Fielding	Support Worker	5 Years
Erin Gardiner	Team Leader	5 Years
David Smith	Support Worker	5 Years

THE
Mai-Wel
GROUP

Phone: 02 4932 8599 • Facsimile: 02 4932 4286 • P.O. Box 835 MAITLAND NSW 2320 • 115a South Street Telarah NSW 2320
Email: maiwel@maiwel.com.au • Web: www.maiwel.com.au • Mai-Wel Limited ABN 88 060 661 476 CFN 10919



The Mai-Wel NETWORKER



Winning team of Melinda Smith, Aaron Kearney and Effie



Back Row L-R Andrew Daddo, Melinda Smith, Bryan Dawe, Brian Burke, Aaron Kearney. Front Row L-R Effie, Mai-Wel Group CEO Pennie Kearney, Judy Mitchell and Leigh Maughan.

Crowd claims Baby Boomers to be a National Treasure at the 2010 Mai-Wel Group Celebrity Comedy Debate

With more than 75% of the audience claiming to be baby boomers – they certainly proved to be more 'treasures' than 'nuisances' on Saturday 17th July, at The Mai-Wel Group Comedy Debate, raising more than \$20,000 for the very worthwhile cause.

Effie Stephanides and fellow 'Gen X-ers' Aaron Kearney and Melinda Smith took no prisoners in the generational war at Maitland Town Hall in front of a full house. The team successfully argued that 'Baby Boomers ARE indeed a National Treasure' – who would have thought!

This year's event welcomed the support of a list of well known national celebrities including the 7.30pm Report's Bryan Dawe, and self-proclaimed 'Wog Girl' Effie Stephanides, with TV personality and famous 'Daddo' brother, Andrew Daddo as Master of Ceremonies, who along with Debate Adjudicator, Brian Burke, kept the debaters in their arm chairs and on the right track.

Maitland based business woman and physiotherapist, Judy Mitchell, and former television and radio sports broadcaster, Leigh Maughan, battled gallantly alongside team captain, Bryan Dawe. However, they were no match for Effie Stephanides and her vocal trio, Aaron Kearney from 1233 ABC Radio's breakfast program, and former news presenter Melinda Smith, who took things up a notch vocally in their fight to take home the golden microphone via a unanimous crowd decision.

The 2010 Debate proved a winning formula in its sixth year of the event attracting a sell-out crowd, setting the record as the most successful year to date. *Continued inside*

INSIDE THIS ISSUE

Comedy Debate
New Headquarters Completed
Creative Arts Program Established

2010 Mai-Wel Comedy Debate – Continued

"Each year we wait with much anticipation as the Debate arrives in Maitland for a night of comedic laughter and joyous entertainment, and Saturday night's Debate was the jewel in the crown of events on the 50th anniversary calendar", said The Mai-Wel Group CEO Pennie Kearney

"Once again the community has come on board to support this truly enjoyable fundraising event, allowing us to continue to provide ongoing support, quality care and excellent services."

"I sincerely thank each and every worker and volunteer, contributor, supporter and sponsor for their generosity in making the 2010 Debate the most successful to date".

The Mai-Wel Group wishes to thank and acknowledge the support of the following individuals and businesses whose support ensured the Debate was a success; 1233 ABC Newcastle, The Maitland Mercury, Prime, Newcastle Herald, Coca Cola Amatil, McWilliams Mount Pleasant, Tooheys, Mansfield Functions and Catering, Crowne Plaza Hunter Valley, Natalie's Limousines, A1 Audio and Lighting, Maitland City Council, Beavis Party Hire, Judy Nadin and Rusty Vault, Commonwealth Bank, The Old George and Dragon Restaurant, Hope Estate, Tony Cant Real Estate, P&O Cruises, Harvey World Travel Maitland and Rutherford, Brad Sangster at The Good Guys East Maitland, Woohoo for Hair, Live n Cookin' @ Lizotte's Restaurant, Civic Theatre, Mary Kay Cosmetics and Eclipse Media, Events and PR.

Debate Raffle

A highly successful aspect of the Mai-Wel Celebrity Comedy Debate was the raffle which raised a record amount in 2010.

Over 1400 tickets were sold in the weeks leading up to the Debate and on the night, raising in excess of \$7000 which will go towards furnishing the new Mai-Wel Community Centre in John Street, Telarah.

Featuring as first prize, won by B. Morris of Charlestown, was a twin cabin on the P&O Pacific Sun for 10 nights thanks to Harvey World Travel Maitland and Rutherford and P&O Cruises.

Second prize, proudly donated by Brad Sangster of the Good Guys East Maitland, a 42" LG HD Plasma TV was won by A. Thodas of Merewether.

S. Olive of Buttaba took home third prize, a Hair and Gift Pack donated by Woohoo for Hair at Charlestown. Fourth prize, donated by Live n Cookin' at Lizotte's New Lambton, was won by E. Saxby of Bolwarra. J. Worth of Lorn claimed fifth prize, a double pass to "A Day in the Death of Joe Egg" which was donated by the Civic Theatre Newcastle. Sixth prize winner, H. Berriman of North Ryde, took home a Mary Kay Mini Miracles Skin Care Set and Simply Chic Fragrance Set.

Thank you to all who supported the 2010 Mai-Wel Celebrity Comedy Debate raffle. Without your support this fantastic outcome would not have been possible.



Winner of a 42" LG Plasma TV in the Mai-Wel Debate Raffle, Mr Angelo Thodas with Brad Sangster from the Good Guys East Maitland.

Focus on TTW

Recently, the Mai-Wel Transition to Work Program was approached to present at the 2010 Regional Youth Development Officers Network (RYDON) conference held in Newcastle on the 21st and 22nd July, 2010.

A team of clients and staff delivered a session to a group of Youth Services workers on how Youth Services can make their programs more inclusive for people with a disability. The presentation, titled "I am a Young Person, not a Disability", aimed to provide information and awareness around the concept that young people with a disability have the right and ability to participate in all the activities and training that Youth Services offer.

Three clients presented information about their life experiences and how they do not wish to be treated differently from any other person that may enter a Youth Service.

Katrina Lewis, Coordinator of the Mai-Wel Transition To Work Program said presenting at the 2010 RYDON Conference was a very exciting opportunity and a fantastic way to

enhance the relationship between people with a disability and local Youth Services.

"For the past three years the Mai-Wel Transition To Work Program has been invited to present at the RYDON conference which is a credit to the ability of our clients and staff. The two day conference had more than 130 people in attendance and it was a great opportunity for our clients to provide information and educate Youth Workers about their experiences, as well as introduce our service and explain what the Transition To Work Program, and other similar programs in the sector, can offer to young people with a disability in the community. Feedback from the surveys completed at the end of the presentation stated that participants in our session found it to be very worthwhile with useful information that they could take back to their workplace." Miss Lewis said.

Transition To Work (TTW) is a two year program (18 hours per week) designed to assist young people with a disability to develop pre-vocational, social, work and decision making

skills to achieve sustainable employment, independence and make a successful transition from school to adult life.

Service users are assisted to develop pre vocational and work readiness skills, develop social and interpersonal communication skills, acquire decision making skills, gain confidence to make the transition from school to employment, vocational education and training or higher education and sample work in a variety of industries.

To develop these skills and eventually transition into open or supported employment at the end of the program, training is delivered in a fun interactive adult learning environment. The training is tailored to the individual learning styles and goals of each client so that they can perform satisfying and meaningful work consistent with their employment goals, and eventually develop the skills and qualifications necessary for their transition into sustainable employment.

Creative Arts Program Established Thanks to Local Support

During the last five months, thanks to the generous support of the local community, The Mai-Wel Group has raised in excess of \$8000 to help establish an Arts, Crafts and Performance Therapy Program. This program, formally named the Creative Arts Program, recently moved into the new Mai-Wel Community Centre in John Street, Telarah, and with a new permanent home can focus on rolling out creative arts to a variety of clients.

Early participants in the program include Community Participation clients, Flexible Living Options (FLO) residents and a number of supported employees. The goal is to build skills of both clients and staff to ensure that the program can be delivered to a diverse group with a variety of activities.

Already clients are working with wood (most of which is off-cuts from PACE Setters) to create candle holders, picture boards and table centrepieces. Wire, beads and buttons (from The Enterprise Centre's rag cutting division) have been used to create bouquets of flowers and greeting cards from a variety of media.



Suzie Stuart and Grace Cawthorne creating greeting cards and two of the creations made in the program.

This exciting program allows clients to build interest, expand hobbies and experience in a variety of arts. It also helps to develop fine motor skills, focus and build a sense of achievement. Thank you for supporting the Creative Arts Program.

If you are interested in helping to resource this valuable program, please contact John Lechner, Manager of Business Development and Philanthropy on 02 4932 8599.

TTW client profile

MATTHEW RINKIN

For Mathew Rinkin presenting at the 2010 RYDON Conference was not only an opportunity to inform others about his disability, but to test his new found confidence.

Mathew began his involvement with the Mai-Wel Transition to Work (TTW) Program in January 2009 after completing his Higher School Certificate with a goal to gain paid work once finishing the program.

"TTW has helped me do things that I haven't done before. I'm learning new skills all the time and building confidence. TTW has helped me become more independent and helped me to learn to make decisions for myself", he said.

Mathew was among a group of three TTW service users recently given the opportunity to be involved in the 2010 RYDON (Regional Youth Development Officers Network) Conference. The presenters delivered a session to a group of Youth Services workers on how Youth Services can make their programs more inclusive for people with a disability.

"I had to prepare a speech for the day and practice in front of staff and other clients. I spoke about what I do at TTW, about my disability and how it shouldn't impact on the way others treat me", he said.

Mathew, who in his spare time enjoys playing computer games and spending time with his family and friends, is thankful for the opportunity to be involved with TTW.

"It has been a great opportunity to make new friends. I love community access, the 'Getting Fit and Healthy' sessions and just having fun with everyone", he said.



Mai-Wel Transition To Work service user and RYDON presenter, Matthew Rinkin.

Upcoming 50th Anniversary Events

November

Make A Difference Luncheon *Date to be confirmed*

Inaugural Corporate Sports Day *Thursday 18th*

December

International Day of People with a Disability Day Breakfast *Tuesday 2nd*

MAI-WEL COMMUNITY PARTNERS



The Mai-Wel Group is fortunate and thankful for the ongoing support of the following Community Partners who continue to assist Mai-Wel to advance the lives of people with a disability.

Support The Mai-Wel Group

YES! I would like to make a donation to The Mai-Wel Group

Mr / Mrs / Ms / Dr (Please circle) First Name _____ Surname _____

Address _____

Suburb _____ State _____ Postcode _____

Phone No. (____) _____

I would like to donate \$ _____ EVERY Week Month Quarter Half Year Year

Donation commencing from: _____ (insert date)

I would like to make a 'once off' donation of \$ _____

Enclosed is a Cheque/Money order payable to The Mai-Wel Group

Please debit my Credit Card Visa / MasterCard (Donations over \$2 are tax deductible)

Name on Card _____

Card Number _____ CCV Number _____

Exp Date ____ / ____ Signature _____

I would like to receive more information on The Mai-Wel Group and its services.

I do not wish to receive further information about The Mai-Wel Group's marketing or fundraising activities

CONTACT: The Mai-Wel Group, Reply Paid 835, Maitland NSW 2320 • PH: 4932 8599 • donations@maiwel.com.au

Mai-Wel Limited ABN 88 060 661 476 CFN 10919



DONATION SLIP